



This project is co-financed by  
the European Union and the Republic of Turkey



## Product IV – Map Validation

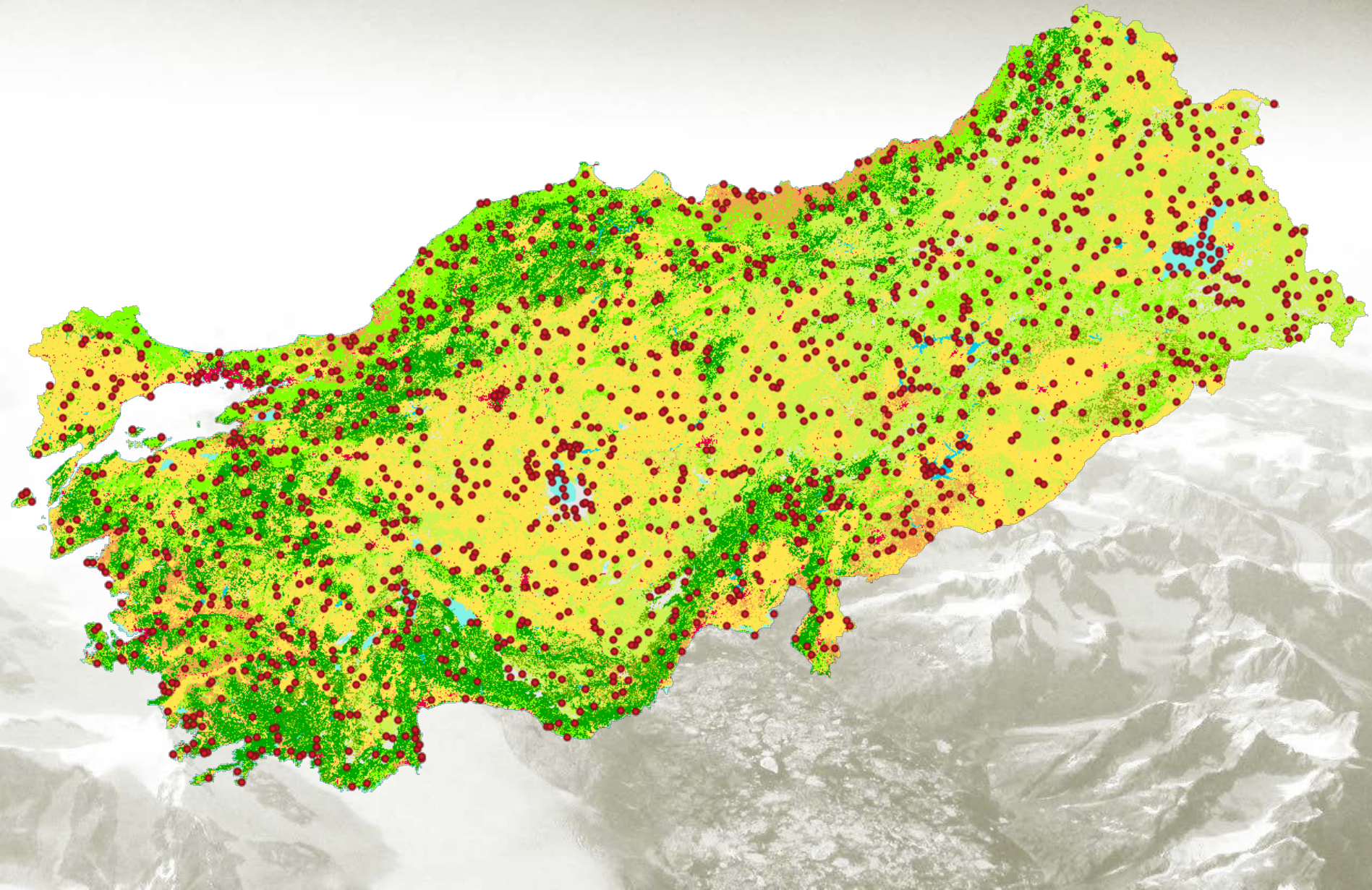
### W 4.2 Workshop January 22, 2019

Mr. Martin Šiklar– Technical Officer

GeoVille GmbH



- **Accuracy and Confidence**
- Method
  - Stratified random sampling
  - Minimum Sample Size for each Class (100 samples)
  - In total around 1500 samples
  - Blind validation by trained experts





## LANDCOVER TURKEY 2015

		REFERENCE / GROUND TRUTH													95% Confidence Interval
		Deciduo us Forest	Coniferou s Forest	Mixed Forest	Degraded Forest	Annual Crops	Perennial Crops	Herbaceou s Cover	Manage d Water	Unmanage d Water	Settlement s	Other Land	Row Total	User's Accuracy	
CLASSIFICATION	Deciduous Forest	94	4	3	12	0	1	2	0	0	0	0	116	81.03%	4.42%
	Coniferous Forest	6	118	8	3	0	0	2	1	0	0	0	138	85.51%	3.45%
	Mixed Forest	6	5	88	1	0	0	0	0	0	0	0	100	88.00%	3.64%
	Degraded Forest	3	4	0	81	0	1	9	0	0	0	2	100	81.00%	4.77%
	Annual Crops	1	1	0	1	283	2	31	0	0	0	0	319	88.71%	1.96%
	Perennial Crops	3	1	1	2	10	81	0	0	0	0	2	100	81.00%	4.77%
	Herbaceous Cover	3	3	0	0	15	4	289	0	0	0	10	324	89.20%	1.90%
	Managed Water	0	0	0	0	0	0	0	98	2	0	0	100	98.00%	1.41%
	Unmanaged Water	0	1	0	0	0	0	2	0	96	0	1	100	96.00%	2.01%
	Settlements	0	0	1	0	0	3	5	0	0	89	2	100	89.00%	3.46%
	Other Land	1	0	0	0	0	0	1	0	4	1	93	100	93.00%	2.70%
Column Total		117	137	101	100	308	92	341	99	102	90	110	1597		
Producers Accuracy		80.34%	86.13%	87.13%	81.00%	91.88%	88.04%	84.75%	98.99%	94.12%	98.89%	84.55%			
95% Confidence Interval		4.50%	3.37%	3.77%	4.77%	1.66%	3.79%	2.25%	1.00%	2.44%	1.10%	4.01%			
Overall Accuracy		88.29%													
95% CI: (0.8661, 0.8983) Kappa: 0.8667															



# **LULUCF – TR**

## **GHG Monitoring and Reporting System**

Mr. Martin Šiklar– Technical Officer

GeoVille Information Systems and Data Processing GmbH

siklar@geoville.com

*This publication has been produced with the financial assistance of the European Union.*

*The contents of this publication is the sole responsibility of the AESA Consortium and can in no way be taken to reflect the views of the European Union.*